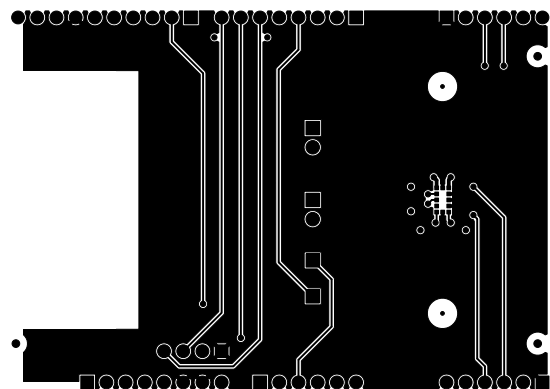
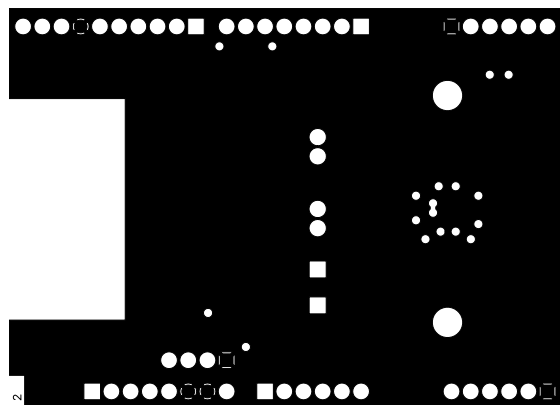


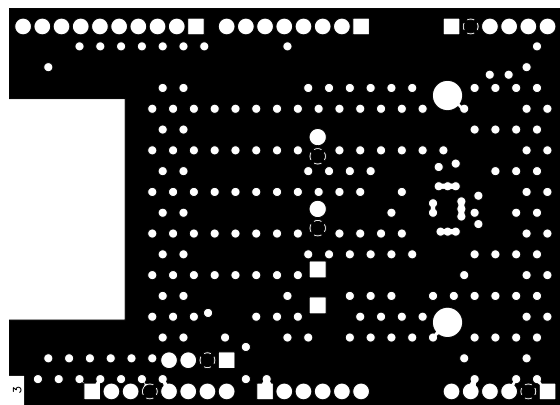
CADENERGY pcb design experts		
JOB No. J5943	BOARD NAME PCB4344 X-NUCLEO-53L4A3	REV / ISS A
DESIGNED BY GB		
DATE 04-2023	DESC Layer 1 - TOP	



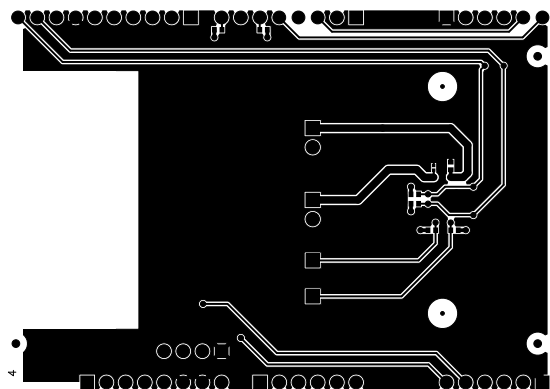
CADENERGY <small>PCB Design Experts</small>		
JOB No.	J5943	BOARD NAME
DESIGNED BY	GB	PCB4344 X-NUCLEO-53L4A3
DATE	04-2023	REV / ISS
		A
DESC Layer 2 - GND		



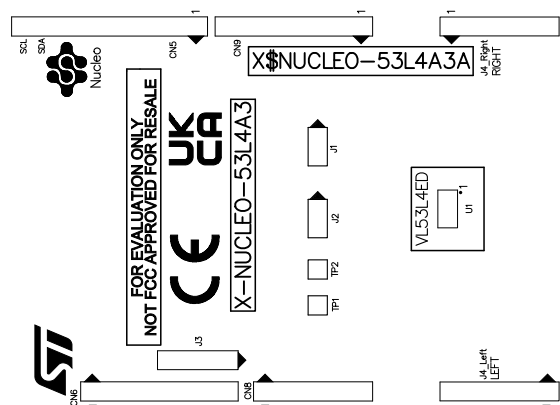
CADENERGY <small>PCB Design Experts</small>		
JOB No.	J5943	BOARD NAME
DESIGNED BY	GB	PCB4344 X-NUCLEO-53L4A3
DATE	04-2023	REV / ISS
DESC Layer 3 - POWER		A




CADENERGY <small>PCB Design Experts</small>		
JOB No.	J5943	BOARD NAME
DESIGNED BY	GB	PCB4344 X-NUCLEO-53L4A3
DATE	04-2023	REV / ISS
		A
DESC Layer 4 - BOTTOM		




CADENERGY		BOARD NAME		REV / GS
JOB No.	J5943	PCB4344		A
DESIGNED BY	GB	X-NUCLEO-53L4A3		
DATE	04-2023	DESC Top Overlay		





		BOARD NAME		REV / ISS
JOB No. J5943		PCB4344 X-NUCLEO-53L4A3		A
DESIGNED BY GB				
DATE 04-2023		DESC Bottom Overlay		


PCB4344

7681 JSWMI










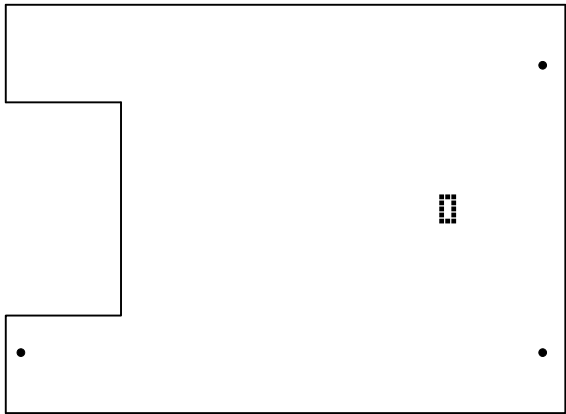
CS


ES

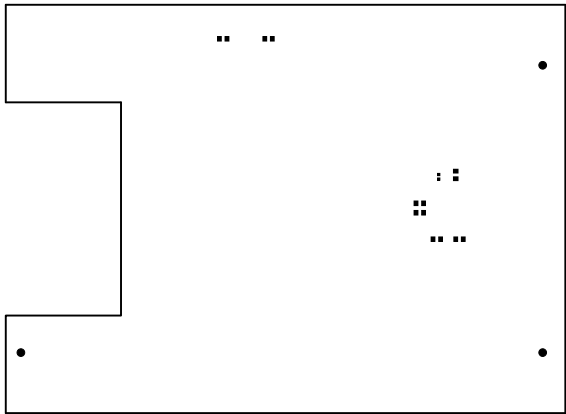
RE

BR

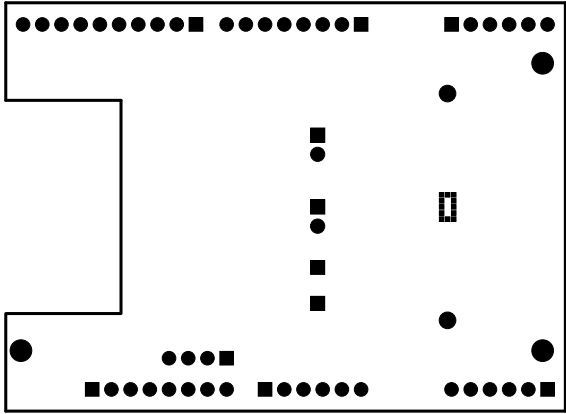
		
JOB No.	J5943	BOARD NAME
DESIGNED BY	GB	PCB4344 X-NUCLEO-53L4A3
DATE	04-2023	REV / ISS
		A
DESC		Top Paste



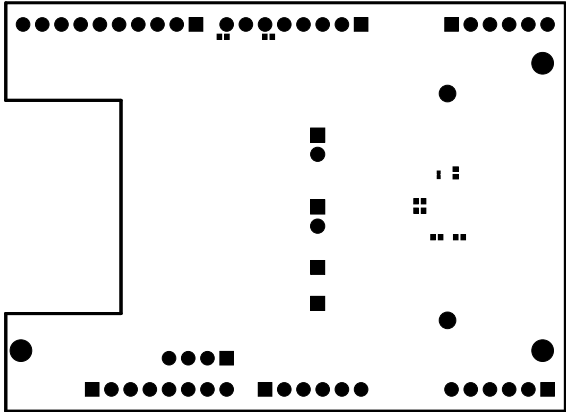
		
JOB No.	J5943	BOARD NAME
DESIGNED BY	GB	PCB4344 X-NUCLEO-53L4A3
DATE	04-2023	REV / ISS
DESC Bottom Paste		A



CADENERGY <small>PCB Design Experts</small>		
JOB No.	J5943	BOARD NAME
DESIGNED BY	GB	PCB4344 X-NUCLEO-53L4A3
DATE	04-2023	REV / ISS
		A
DESC Top Solder		



CADENERGY <small>PCB Design Experts</small>		
JOB No. J5943	BOARD NAME PCB4344 X-NUCLEO-53L4A3	REV / ISS A
DESIGNED BY GB		
DATE 04-2023	DESC Bottom Solder	



CADENERGY

pcb design experts

JOB No.

J5943

DESIGNED BY

GB

DATE

04-2023

BOARD NAME

PCB4344
X-NUCLEO-53L4A3

REV / ISS

A

DESC

Drill Drawing

1. FINISHED BOARD THICKNESS TO BE 1.6mm.

2. BOARD FINISH:- ENIG

3. BOARD CONTRUCTION 4 LAYER FR4 PTH.


4. COPPER THICKNESS: 0.5 oz.

5. RESIST COLOUR: BLUE SILKSCREEN COLOUR: WHITE.

6. NO WITNESS MARK TO BE LEFT ON ANY COMPONENT PAD FROM TESTING BY PCB SUPPLIER.

The figure is a technical drawing of a PCB drill layout. It shows a rectangular board with a width of 74.00mm (+/-0.1mm) and a height of 54.00mm (+/-0.1mm). The board has a complex shape with a large rectangular cutout on the left side. The drawing includes a grid of small circles representing drill holes, labeled with letters A, B, C, and D. The holes are distributed across the board, with a higher density in the central area. The dimensions are indicated by arrows and text at the top and right of the drawing.

Symbol	Count	Hole Size	Hole Tolerance	Plated
A	211	0.30mm	+/-0.10mm	PTH
B	38	1.00mm	+0.10mm/-0.00mm	PTH
C	16	1.10mm	+0.10mm/-0.00mm	PTH
D	2	2.00mm	+0.10mm/-0.00mm	NPTH
267 Total				

		
JOB No.	J5943	BOARD NAME
DESIGNED BY	GB	PCB4344 X-NUCLEO-53L4A3
DATE	04-2023	REV / ISS
		A
DESC Drill Guide		

